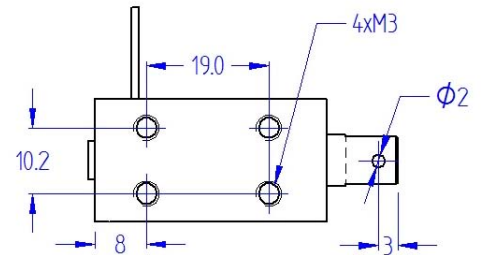
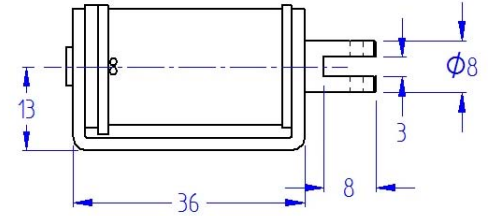
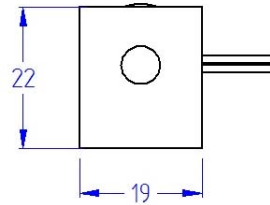
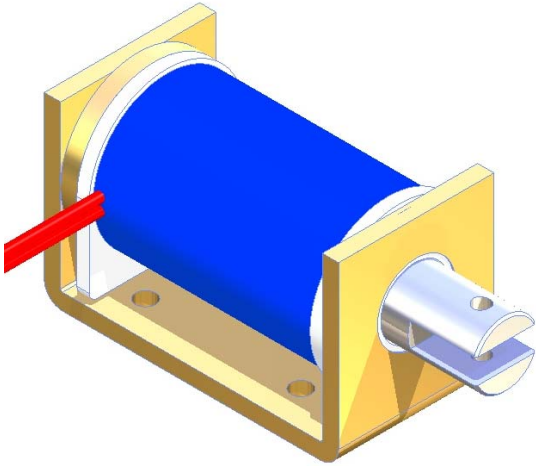




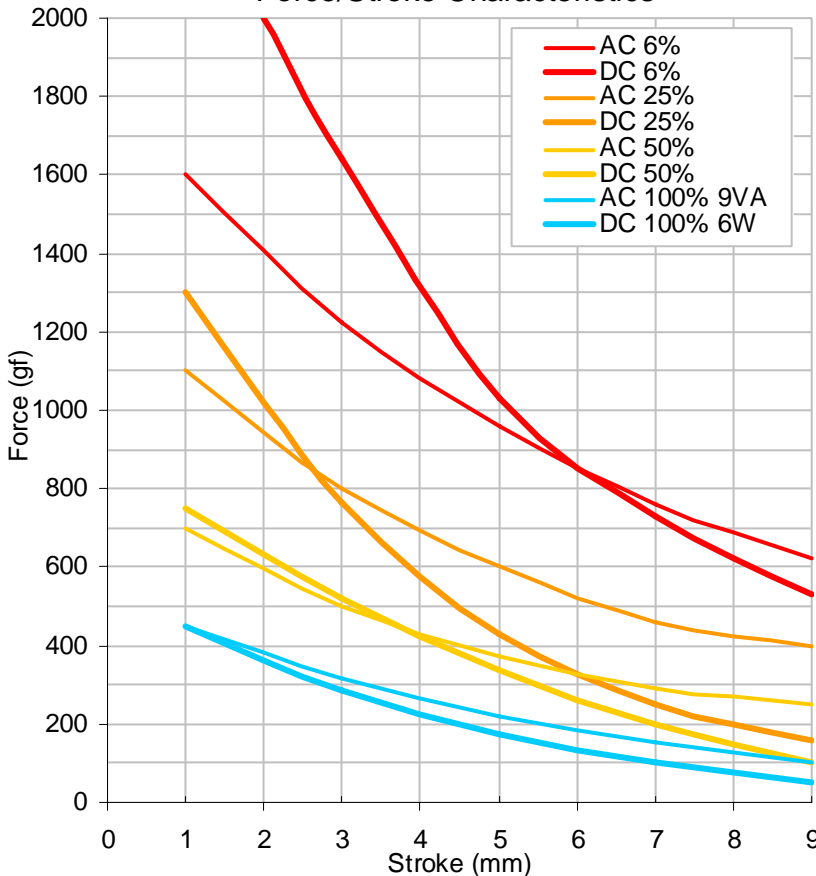
# C - Frame Solenoid

# SC0836



Dimensions in millimetres  
Total solenoid weight: 80g  
Plunger weight: 12g

### Force/Stroke Characteristics



- Pull or thrust type
- Flying leads with optional terminals
- Corrosion resistant plated parts
- Optional return spring
- Customised plunger ends and fixing centres
- Optional voltages and duty ratings

